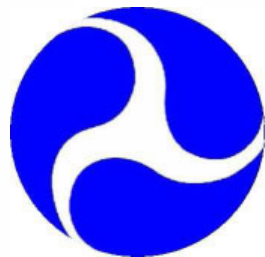


Pavement Preservation Technical Appraisal Program

*Jim Sorenson, Team Leader
Construction and System Preservation*

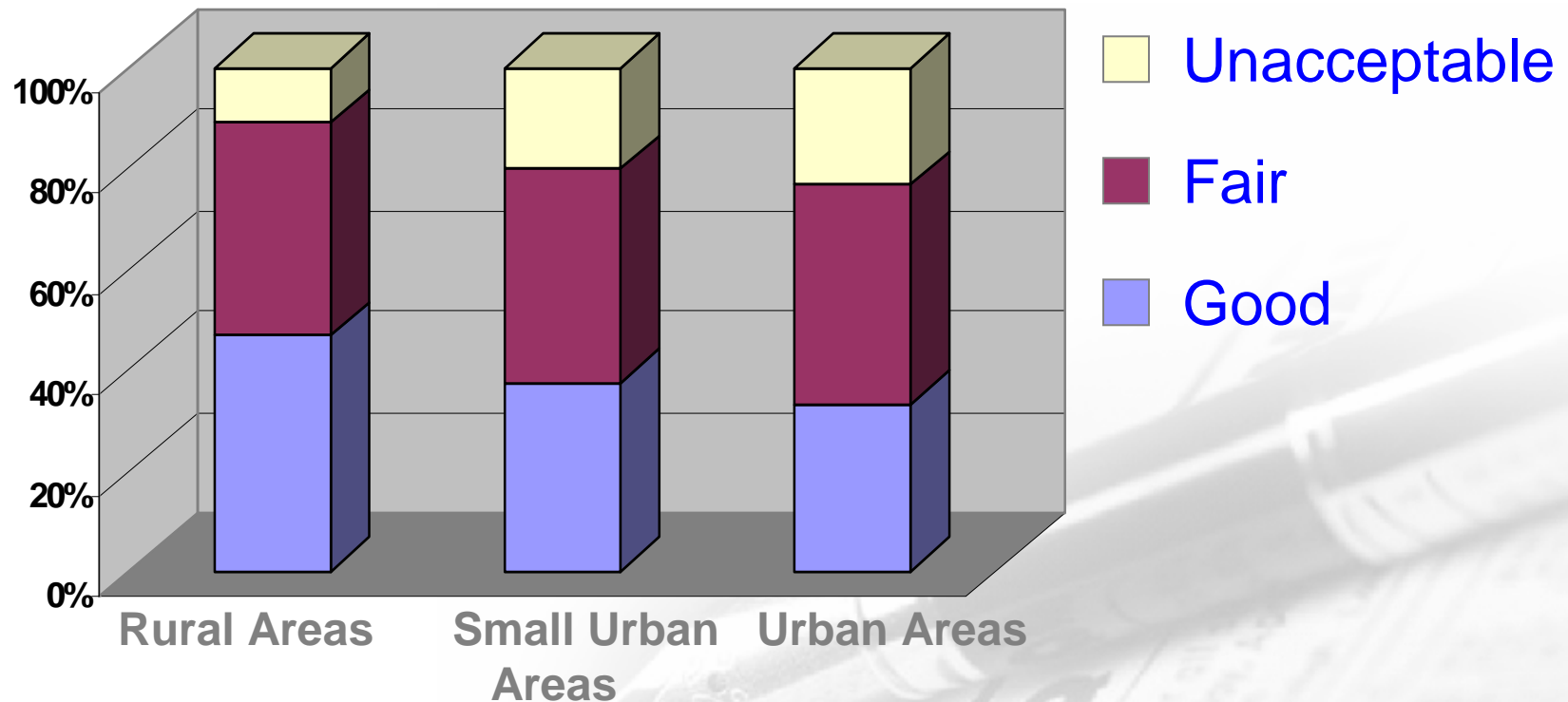


Asset Management

A strategic approach to the business decision process that maximizes the benefits from resources used to operate and preserve the transportation infrastructure.

Pavements in the U.S.

2,523,468 miles of paved roads.
43.5% are in "good" condition
14% are in "unacceptable" condition



A Priority for Preservation

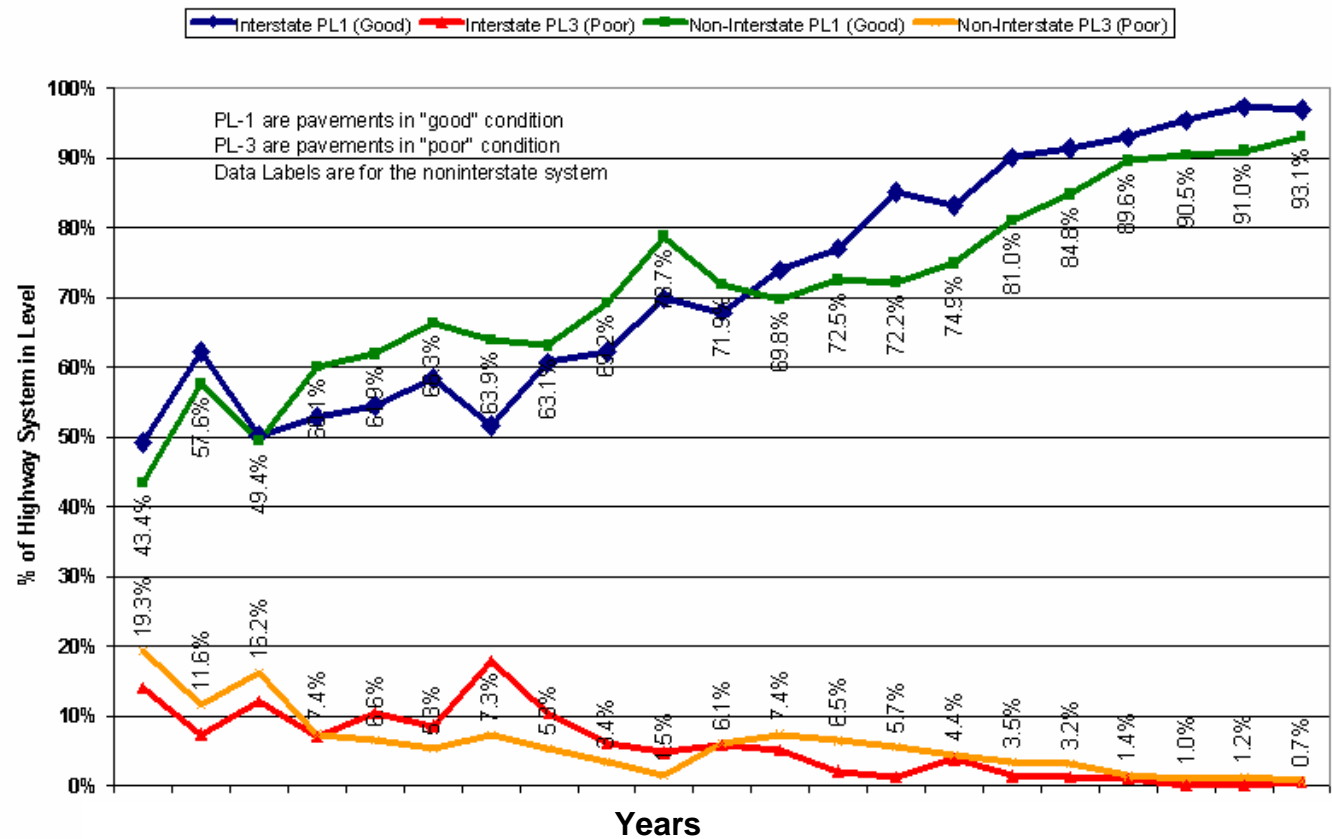
- **Meet the customers' demands**
- **Make existing capital investments last longer**
- **Stretch available funding**
- **Reduce the frequency of costly, time consuming, traffic disrupting rehabilitation & reconstruction projects**

Pavement Preservation

won't bring short-term glory,
but it *will* bring long-term satisfaction!



Performance Level



A Priority for Preservation

**The
Pavement Preservation
Technical Appraisal
Program**

A Priority for Preservation

FHWA provides support and technical assistance to State departments of transportation (DOT's) seeking to develop, expand, or improve their programs for pavement preservation.

A Priority for Preservation

Each appraisal is approximately 80 hours of program review including:

- **interviews of key personnel**
- **oral closeout**
- **written report**
 - ***observations***
 - ***recommendations***

A Priority for Preservation

Each appraisal will be conducted in partnership with:

- **FHWA Division Office**
- **State DOT**

A Priority for Preservation

Appraisals are conducted in a team approach, with *ncpp* in the lead.



Topic Areas

Topic Areas Are:

1. **Program Implementation**
2. **Public/Key Decision Maker/Legislator – Relations**
3. **Pavement Management System**
4. **Project Selection**
5. **Preservation Treatments**
6. **Business Process**
7. **QC/QA**
8. **Training**
9. **Materials**
10. **Performance Monitoring**
11. **Research & Development**

Rhode Island DOT



New Jersey DOT



Questions ?

?

Thank
You