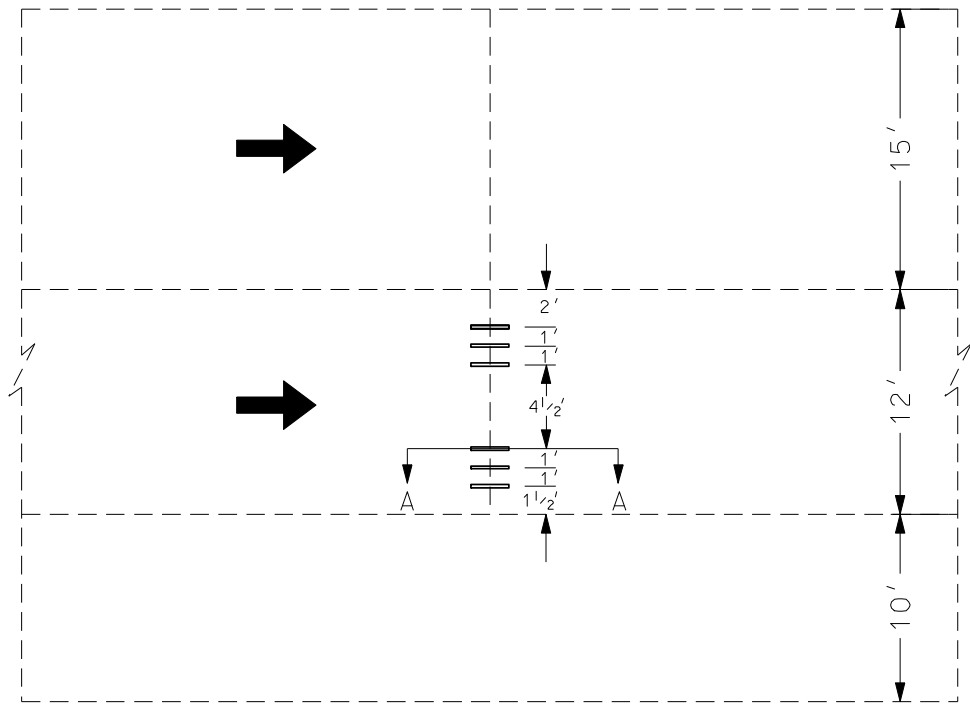
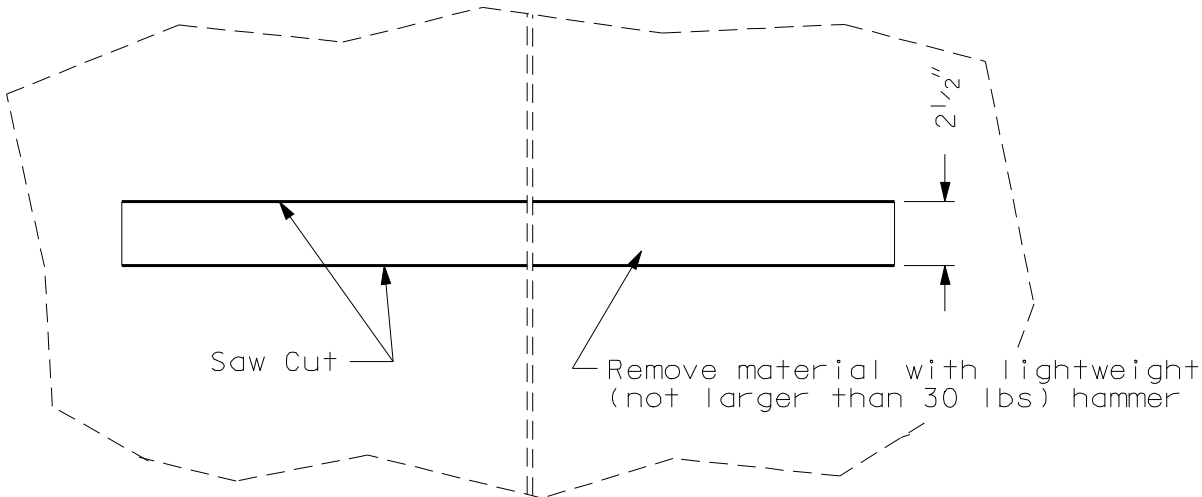


STATE	PROJECT NO.	SECTION NO.	SHEET NO.
ND	project number	sec	page

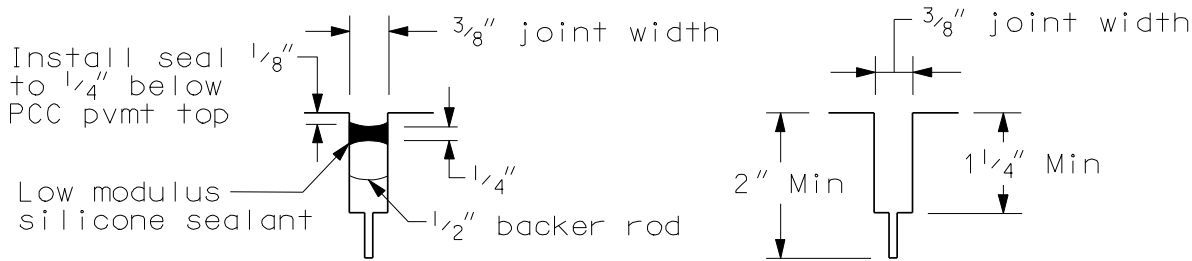


Retrofit Dowel Bar Spacing



Plan View Dowel Bar Retrofit Slot Material Removal

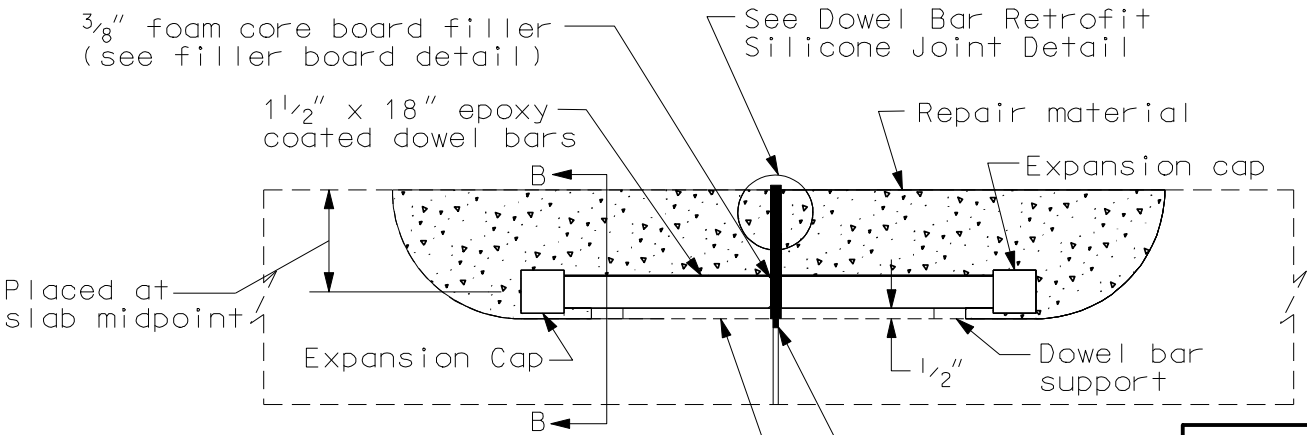
Note: The 12' driving lane where the dowel bar retrofit is placed shall be sawed and sealed according to the Dowel Bar Retrofit Silicone Joint Detail. All costs to saw and seal the dowel bar retrofit joints shall be paid for at the unit price bid for "1/2 IN Transverse PCC Joint Clean & Sealing."



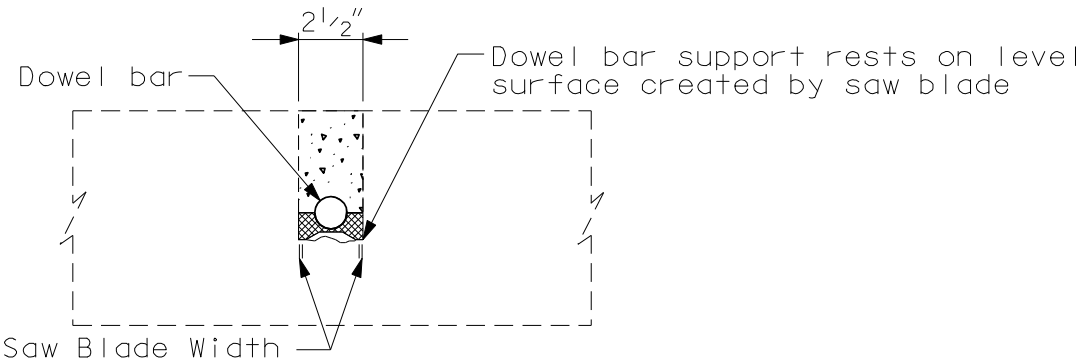
Transverse Joint Seal

Transverse Joint Sawing

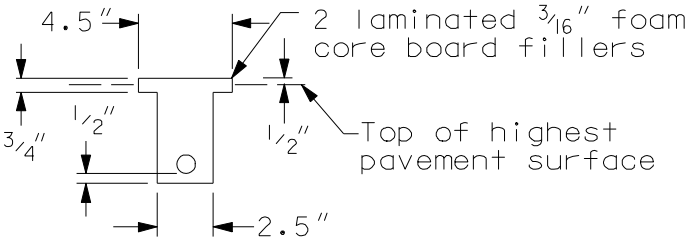
Dowel Bar Retrofit Silicone Joint Detail



Section A-A
Dowel Bar Installation Detail



Section B-B



Filler Board Detail

NOTE: Repair material shall be placed above the existing PCC pavement (a maximum of 1/4".)

Retrofit Dowel Bar
Installation Detail

Concrete Pavement Repair,
Grinding & Incidentals